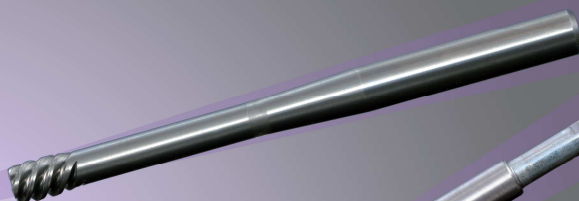
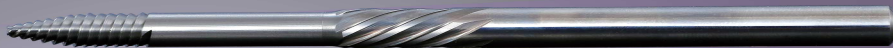




Specially designed tools

# Cutter JF brush



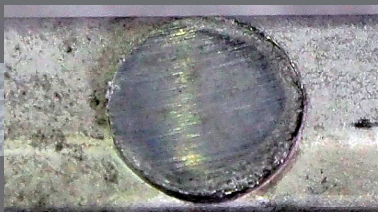
Before  
processing

After  
processing

Milling cutter








JF brush







KREUZ Co.,LTD.

We manufacture tools for deburring with multi-axis robots, special machines, machine tools, etc. Depending on the machining method, you can select "Milling cutter" for side machining, "Chamfering cutter" for machined surface, "JF brush" with minimum deformation, and "N file" of vibration tools.

## Example

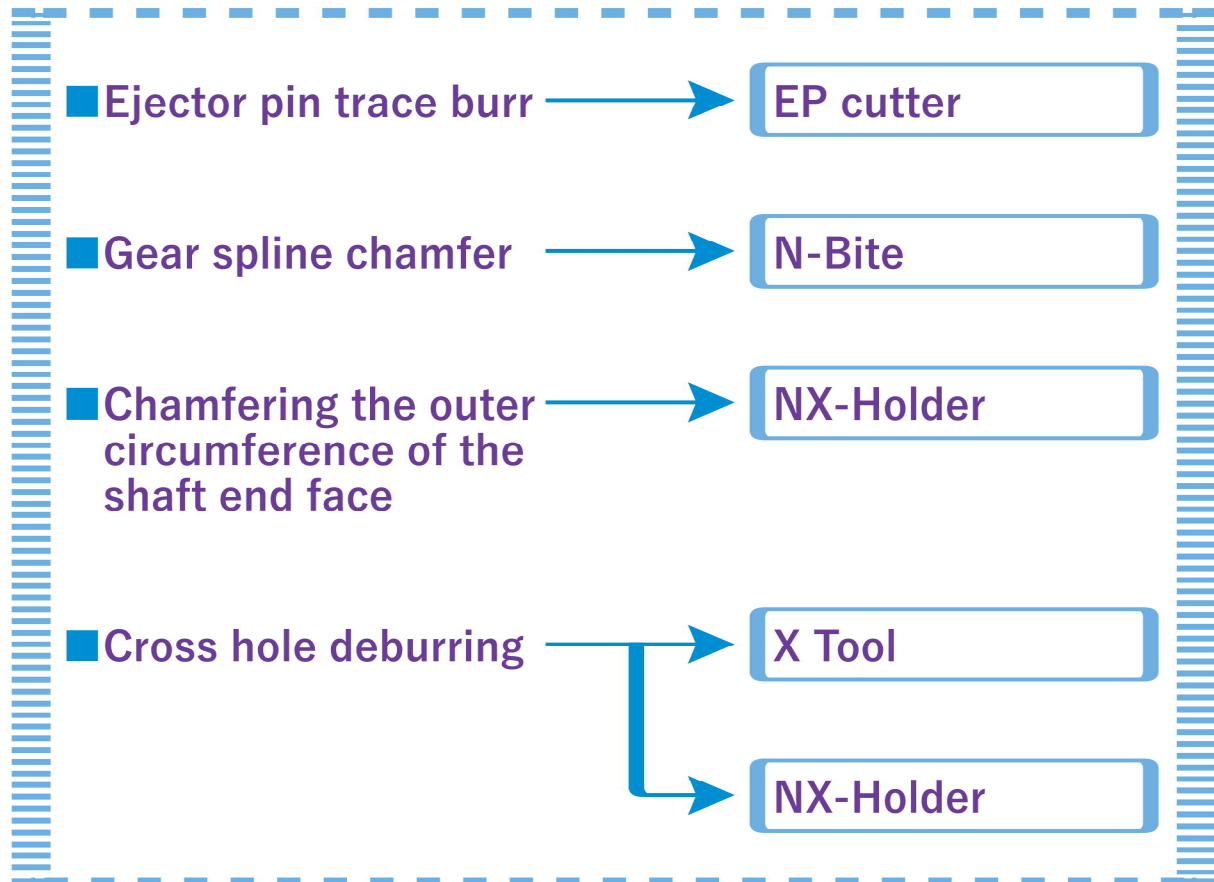
Milling cutter		For burrs of parting lines of die-cast products, gate overflow marks, parting lines of castings, etc.			
	length	Blade length	Shank diameter	Material type	Note
	150	55 (22/30)	Φ10	Tool steel	Multi-blade type Front end taper angle 10° Φ13 with flange for stop positioning
	length	Blade length	Shank diameter	Material type	Remarks
	120	40	Φ8	Carbide	Front end taper angle 15°
	length	Blade length	Shank diameter	Material type	Special note
	100	10	Φ8	Carbide	
	length	Blade length	Shank diameter	Material type	Special note
	150	55 (22/30)	Φ10	Carbide	Front end taper angle 10°
	length	Blade length	Shank diameter	Material type	Special note
	80	32.2 (10.8/11.4/10.0)	Φ8	Carbide	Front end taper angle 50°

Chamfer cutter		For processing burrs of castings and forgings.			
	length	Blade length	Shank diameter	Material type	Special note
	37	7	Φ6	Carbide	Front end angle 90° Re-gridding
	length	Blade length	Shank diameter	Material type	Special note
	100	13.1	Φ12	Carbide	Front end angle 90° Re-gridding
<div> <div>【Tip】</div>  <div>【Dedicated holder】</div>  </div>	length	Blade length	Shank diameter	Material type	Special note
	28	5.5	Φ6	Carbide	Front end taper angle 120°
	length		Shank diameter	Material type	Special note
	94.5		Φ10	Tool steel	Uses M4 set screws



100

100



**KREUZ Co.,Ltd**

102-7 Jindoike, Noda-cho, Kariya, Alchi, 444-0803 JAPAN

TEL:+81-566-22-5263 FAX:+81-566-25-3339

※All rights reserved. 2021 KREUZ Co.,Ltd.

※Tool specifications are subject to change without notice.